



WindLogics[®]

**Community Based Wind
Development in Colorado**

WindLogics[®]

INDUSTRY AUTHORITY

WindLogics assumes the lead as the world's most influential and respected authority on global wind-energy knowledge.

Focus:

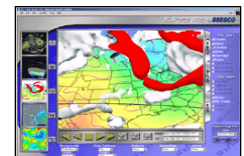
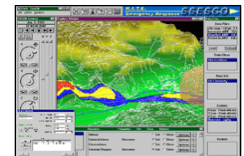
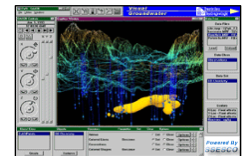
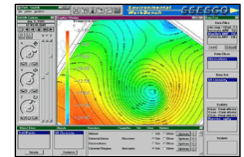
- Wind Resource Assessment
- Wind Variability – 40-year analysis standard
- Wind Forecasting – currently ~5000 MW

Services:

- 800+ Wind Projects to Date, Major Integration Studies
- Data Collection, Mining, Assimilation
- Site Assessment, Due Diligence, Micro-siting
- Global Resource Assessment Capabilities

People:

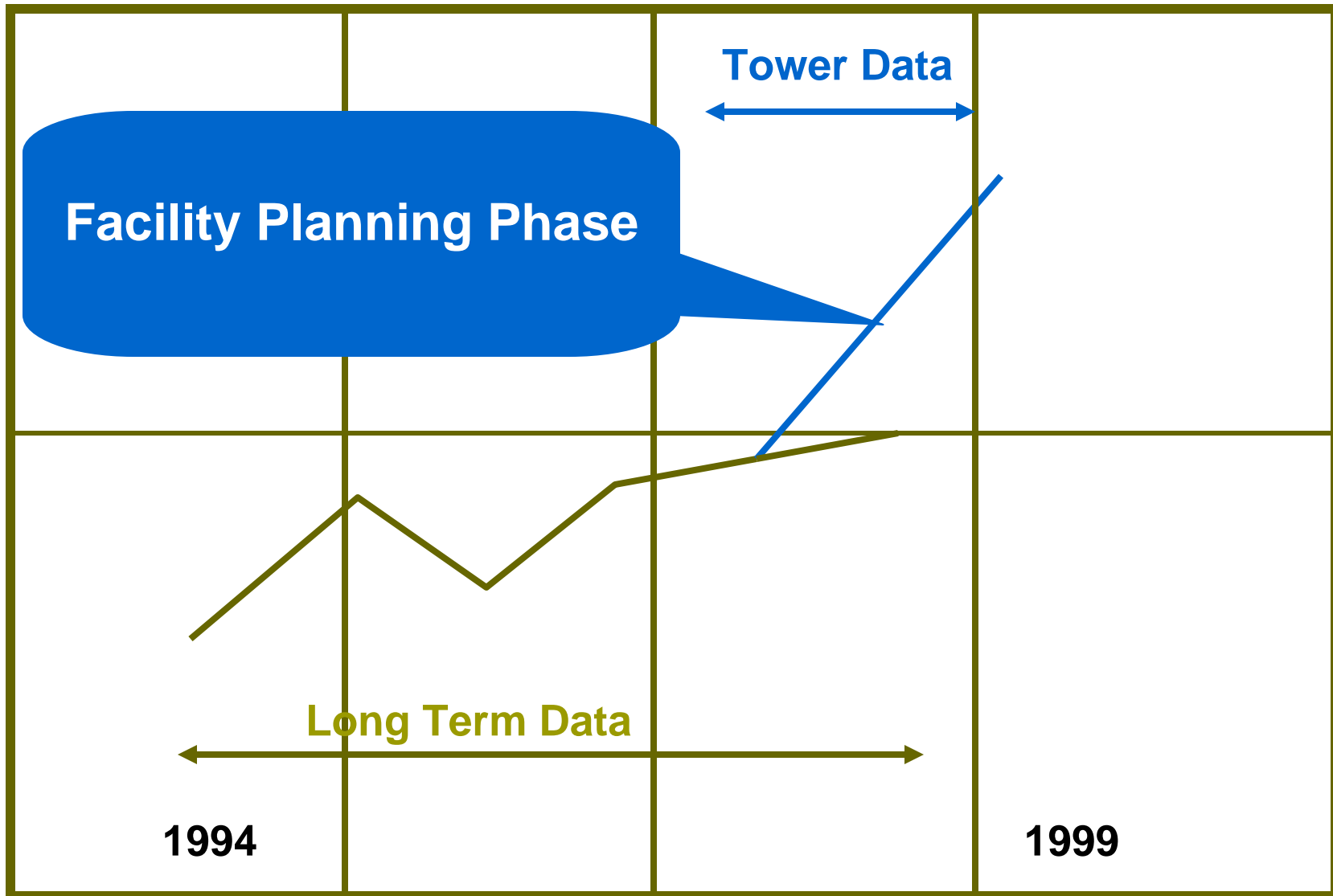
- Team of 8 Ph.D. atmospheric scientists for R&D
- Additional Meteorologists, Software Engineers
- Operations Center for Customer & Data Support



WHY IS THIS IMPORTANT ?

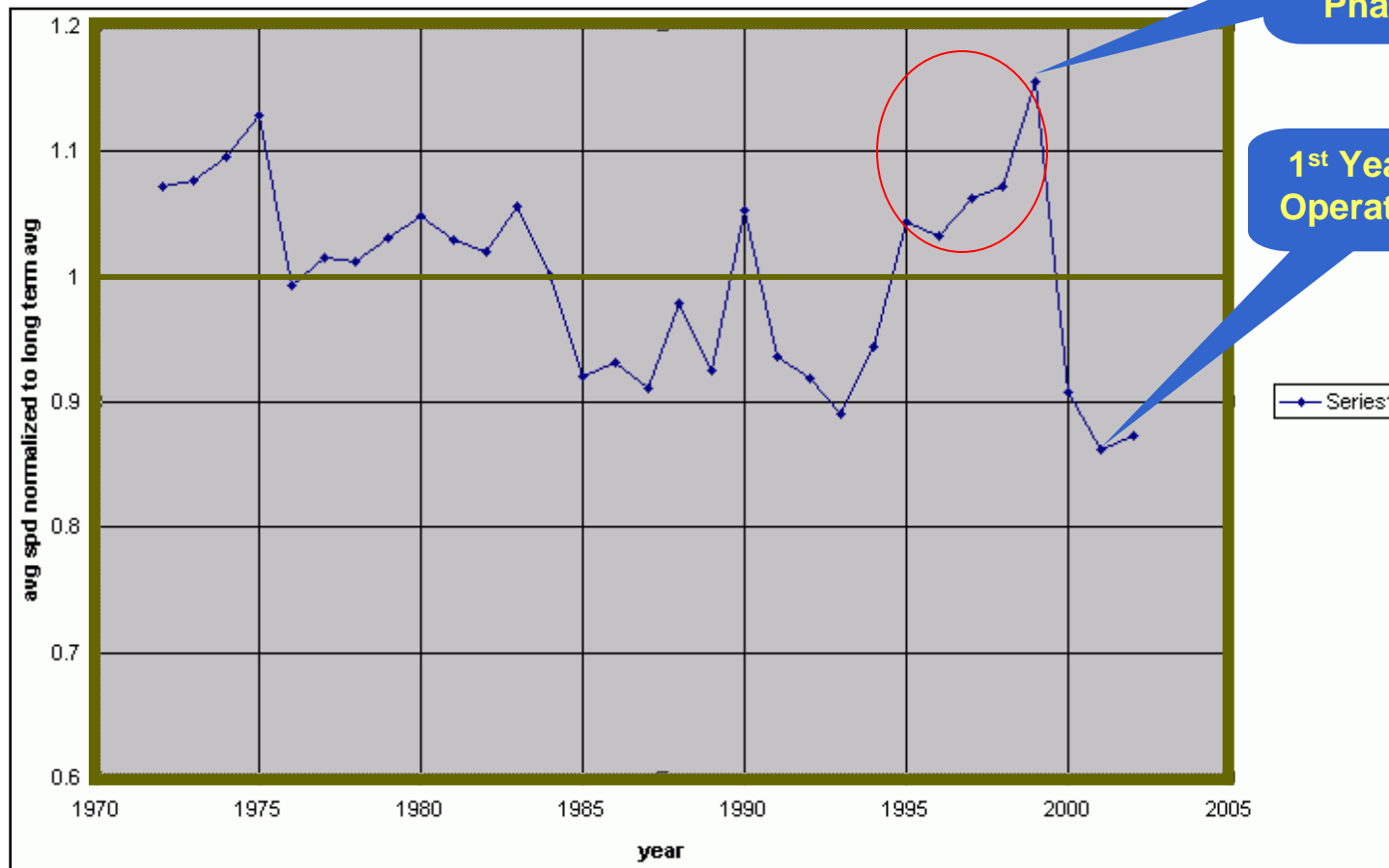
- Wind Speed = Energy Production = \$ \$ \$
- A site with an average 15 mph wind speed contains nearly 60 percent more energy than a site with an average wind speed of 13 mph.
- Long Term Analysis of Wind Variability is crucial to a Successful Project.

A PROJECT: TRADITIONAL PLANNING



WHY IS THIS IMPORTANT ?

Normalized Speed vs. Year



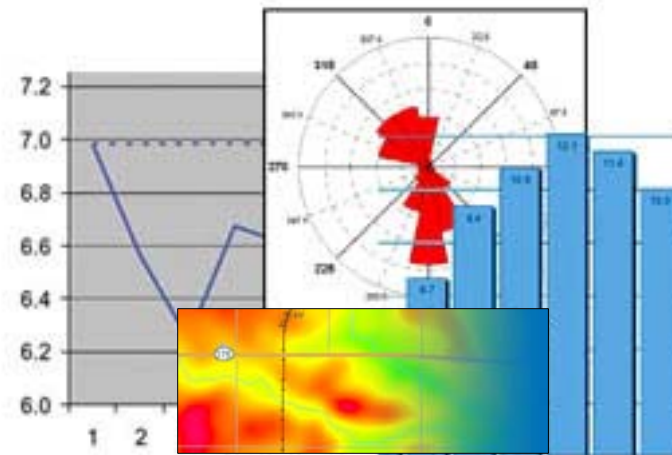
PROJECT PARTNERSHIP

WindLogics delivers the most advanced wind-energy knowledge throughout the lifetime of your project .



Exacting wind knowledge is essential for determining project feasibility and financing.

- Point Study
- Detailed Site Map
- Regional Prospecting Map
- Micrositing
- Maps and Hourly Data
- Tower Data Management



CLIENT TRUST

WindLogics combines proven performance with absolute integrity to deliver the industry's most trusted wind knowledge.



And Many More...



Three Important Steps:

1. Call Gary at WindLogics.
2. Send us a map or location (latitude/longitude) of the Area of Interest. We'll send you a quote for services.
3. Review results with our team in 6-8 weeks.

CONTACT INFORMATION

Gary Pietruszewski

garyp@windlogics.com

Office: 651-556-4226

Mobile: 952-486-1510

www.windlogics.com