



Why a Community Approach is Important: The Lamar Experience

Ownership Matters:

Community-Based Wind Development in Colorado

Lamar, CO - May 7, 2008

JOHN R. STULP

COLORADO COMMISSIONER OF AGRICULTURE

5 Essentials of Wind



- Wind
- Land
- Transmission
- Market
- Investors

Prowers County - History

- Enron
- General Electric Wind
- 2 more name changes
- Colorado Green
 - New owners
 - PPM & Shell Wind
 - Ibedrola

Lamar – Arkansas River Power Authority



- Lamar

- 3 x 1.5 MW turbines at Lamar

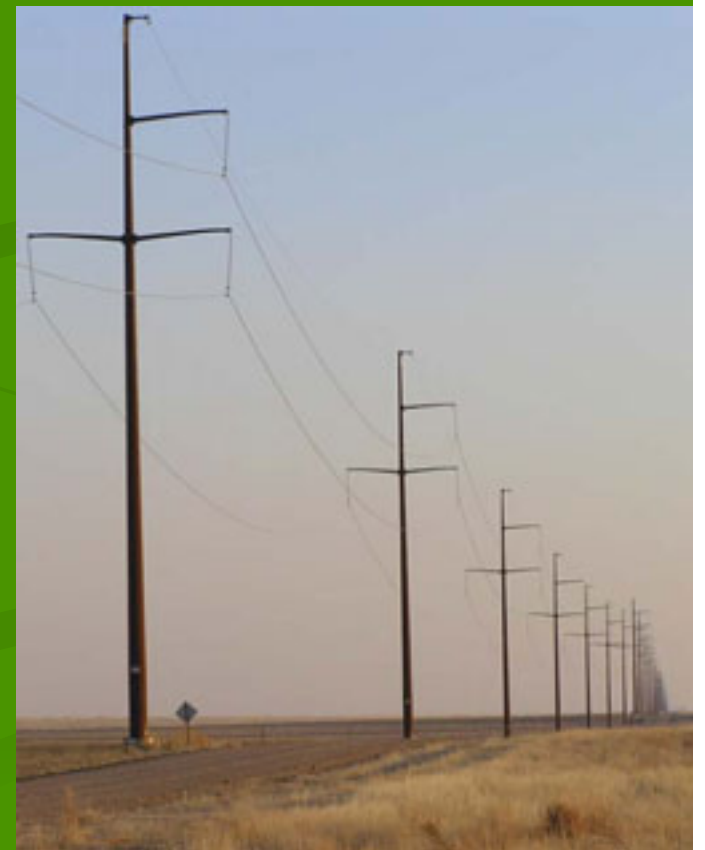
- ARPA

- 1 x 1.5 MW turbine at Lamar
- 1 x 1.5 MW turbine at Springfield

Community Leadership



- County Commissioners
- City Utility Board
 - Manager
 - Board of Director's
- Arkansas River Power Authority



Private Sector Efforts

Prairie Wind Energy, L.L.C.

A large wind turbine stands prominently in the foreground on the right side of the image. In the background, a long line of smaller wind turbines stretches across the horizon. The landscape is a flat, open field with sparse vegetation, and the sky is a clear, light blue.

- Hills
- Wind
- Transmission
- Data Collection
- Consultants
- Legal
- Financial Needs
 - Personal
 - Public Offering (Private)
- Permits
- Markets
- Equipment

RENEWABLES

will help insure the
viability of Agriculture
for the next generation...



through
Profitability
and

Affordable Energy

